

TRUE PLAN

**LIFE SAFETY PLAN**  
SCALE: 1/8" = 1'-0"

## PARKING BUILDING SECURITY GUIDELINES

1. ENSURE ADEQUATE LIGHTING TO DETER CRIMINALS AND IMPROVE VISIBILITY.
2. INSTALL EMERGENCY BLUE CALL BOXES FOR QUICK REPORTING OF INCIDENTS.
3. SET UP INTRUSION DETECTION ALARM SYSTEMS TO DETECT UNAUTHORIZED ACCESS.
4. CONDUCT REGULAR MAINTENANCE AND INSPECTIONS OF SECURITY MEASURES.
5. PROMOTE SECURITY AWARENESS AND ENCOURAGE REPORTING OF SUSPICIOUS ACTIVITIES.

## ACCESS KEY CONTROL SECURITY SYSTEM

1. RESIDENTS AND AUTHORIZED PERSONNEL USE ELECTRONIC KEY CARDS OR FOBs INSTEAD OF TRADITIONAL KEYS.
2. ACCESS CONTROL PANELS ARE PLACED AT ENTRY POINTS AND RESTRICTED AREAS TO REGULATE ACCESS.
3. CARD READERS OR PROXIMITY SENSORS READ THE INFORMATION ON KEY CARDS OR FOBs.
4. ACCESS CONTROL SOFTWARE MANAGES THE SYSTEM, ALLOWING ADMINISTRATORS TO SET PERMISSIONS AND MONITOR ACCESS.
5. DIFFERENT ACCESS LEVELS AND PERMISSIONS CAN BE ASSIGNED TO RESIDENTS AND STAFF.
6. THE SYSTEM KEEPS A LOG OF ACCESS EVENTS FOR REVIEW AND ANALYSIS.
7. THE SYSTEM CAN BE INTEGRATED WITH OTHER SECURITY MEASURES LIKE CAMERAS AND ALARMS ON SITE.
8. THERE'S AN EMERGENCY OVERRIDE FEATURE FOR AUTHORIZED PERSONNEL DURING EMERGENCIES.

## CPTED & SECURITY STRENGTHENING NOTES

1. ALL PUBLICLY ACCESSIBLE EXTERIOR ELECTRICAL POWER OUTLETS HAVE A LOCK AND POWER NEARBY EASILY ACCESSIBLE SECURE INTERNAL CUTOFF SWITCH TO DENY UNAUTHORIZED USE BY INDIVIDUALS EXPERIENCING HOMELESSNESS.
2. ALL PUBLICLY ACCESSIBLE EXTERIOR WATER OUTLET SPIGOTS HAVE A NEARBY EASILY ACCESSIBLE SECURE LOCKING CAP TO DENY UNAUTHORIZED USE BY INDIVIDUALS EXPERIENCING HOMELESSNESS.
3. ANY BLIND AREAS NOT COVERED BY SECURITY CAMERAS, INCLUDING SHARED INTERIOR HALLWAYS, MUST HAVE CORNER SECURITY MIRRORS INSTALLED TO ASSIST IN VISIBILITY AROUND BLIND SPOT CORNERS TO DETER/ PREVENT CONCEALMENT/ AMBUSH OPPORTUNITIES.
4. ALL EQUIPMENT ARE CLEARLY AND PERMANENTLY MARKED WITH SERIAL NUMBERS AND IMAGES OF EQUIPMENT AND SERIAL STORED FOR CRIMINAL INVESTIGATION. THIS INFORMATION IS READILY AVAILABLE IN THE EVENT OF A THEFT OR BURGLARY TO HELP LAW ENFORCEMENT INVESTIGATORS TO QUICKLY TRACK AND RECOVER THE STOLEN ITEMS. THE EQUIPMENT MUST BE SECURED ROBUSTLY TO DETER/ PREVENT THEFT.

## ELECTRONIC SURVEILLANCE NOTES

1. CAMERA LOCATIONS ARE SCHEMATIC IN NATURE. SECURITY COMPANY WILL PROVIDE A FINAL LOCATION TO ENSURE NO SECURITY SURVEILLANCE CAMERA COVERAGE GAPS CAN EXIST
2. ALL CAMERAS ARE STRATEGICALLY PLACED SO THEY WILL NOT BE OBSTRUCTED BY THE GROWTH OF EXISTING OR INSTALLATION OF FUTURE LANDSCAPING
3. ALL LIGHTING PLACEMENT WILL ENHANCE RATHER THAN CONFLICT WITH CAMERA PLACEMENT.
4. SECURITY CAMERAS ARE DIRECTED TO FULLY VIEW ALL PARKING AREAS, BUILDING ENTRANCES AND PEDESTRIAN PATHS OF TRAVEL ALONG AND INTO THE BUILDING PERIMETERS.
5. ANY POTENTIALLY VULNERABLE AREAS THAT CANNOT BE OBSERVED THROUGH NATURAL SURVEILLANCE ARE COVERED BY ELECTRONIC SURVEILLANCE MONITORING.
6. VIDEO SURVEILLANCE AT ALL EXTERIOR BUILDING ENTRANCES INCLUDES AN AUDIBLE/ VIDEO INTERCOM AND CALL SYSTEM.
7. MOTION ACTIVATED SECURITY CAMERAS ARE LOCATED UP TO AND AT THE PERIMETER BOUNDARIES, THE PARKING AREAS, AND ACTIVITY AREAS SUCH AS ANY EXTERIOR AMENITY AREAS TO DETER CRIMINAL ACTIVITIES SUCH AS BURGLARY, AUTO-THEFT, ROBBERY, SEXUAL ASSAULT & BATTERY, ETC.
8. ALL RESIDENTIAL UNITS ARE PRE-WIRED FOR BURGLAR ALARM SECURITY.

## LIFE SAFETY LEGEND

- NEW EXIT LIGHT WITH BATTERY BACK-UP
- EMERGENCY LIGHT WITH BATTERY BACK-UP
- PORTABLE FIRE EXTINGUISHER - 2A 10 BC
- AUTOMATIC EXTERNAL DEFIBRILLATORS
- STOP THE BLEED KITS
- SECURITY CAMERAS



ALL DESIGN AND DETAILS INDICATED BY AND REPRESENTED BY THIS DRAWING ARE FOR USE ON AND IN CONNECTION WITH THE SPECIFIC PROJECT. ALL DRAWINGS HEREIN ARE THE PROPERTY OF AUSTIN FOX ARCHITECTURE AND ARE NOT TO BE USED OR REPRODUCED IN ANY MANNER WITHOUT THE WRITTEN PERMISSION AND CONSENT FROM AUSTIN FOX ARCHITECTURE. WRITTEN DIMENSIONS AND PRECEDENCE OVER SCALED DIMENSIONS ARE THE BEST OF THE ARCHITECT OR ENGINEER'S KNOWLEDGE. THE PLANS AND SPECIFICATIONS COMPLY WITH THE APPLICABLE MINIMUM CODES AND ALL FLORIDA STATUTES. NOTE: AUTHENTIC COPIES OF THIS DOCUMENT SHALL BEAR THE SIGNATURE IN ORIGINAL AND THE SEAL OF THE ATTESTING ARCHITECT OR ENGINEER OF

COPY RIGHT 2024 - 2028

## P&Z SUBMISSION DESIGN DEVELOPMENT

**PROJECT NAME:**

**324 HAUS**

**PROJECT ADDRESS:**

**324 NW 6TH STREET  
POMPANO BEACH, FL, 33060**

**OWNER NAME:**

**770 CAPITAL**

**OWNER ADDRESS:**

**TBD**

**ARCHITECT**

**AUSTIN FOX ARCHITECTURE**

**1754 E Commercial Blvd**

**FORT LAUDERDALE, FL 33334**

**PH: 954-790-2702**

**INFO@AF-ARCHITECT.COM**

**AR101117**

**STRUCTURAL ENGINEER:**

**TBD**

**Name**

**PH:**

**email**

**MEP ENGINEERING**

**TBD**

**ADDRESS LINE**

**ADDRESS LINE**

**phone**

**email**

**CIVIL ENGINEER**

**CONEMCO ENGINEERING, INC.**

**MAYRELLINA FERNANDEZ**

**782 NW 42nd Avenue Unit 635, Miami, FL 33126**

**PH: 786-540-2444**

**mfernandez@conemco.com**

**LANDSCAPE ARCHITECT**

**PARAMETRIKA LANDSCAPE ARCH.**

**GABRIELA ALBORNOZ**

**PH: 480-432-5637**

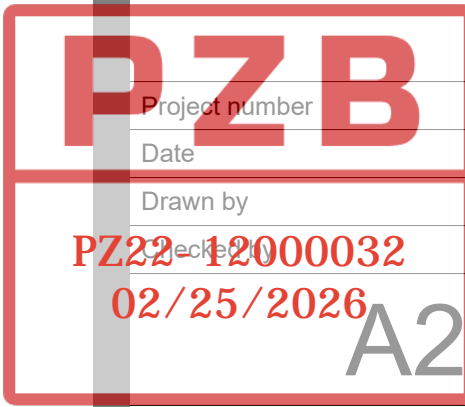
**galbornoz@parametrikadesign.com**

SEAL & SIGNATURE

### REVISION LOG

No.	Description	Date
2	AAC Submission	01.05.26
3	P&Z Submission	01.20.26

## LIFE SAFETY PLAN



Scale

As indicated